

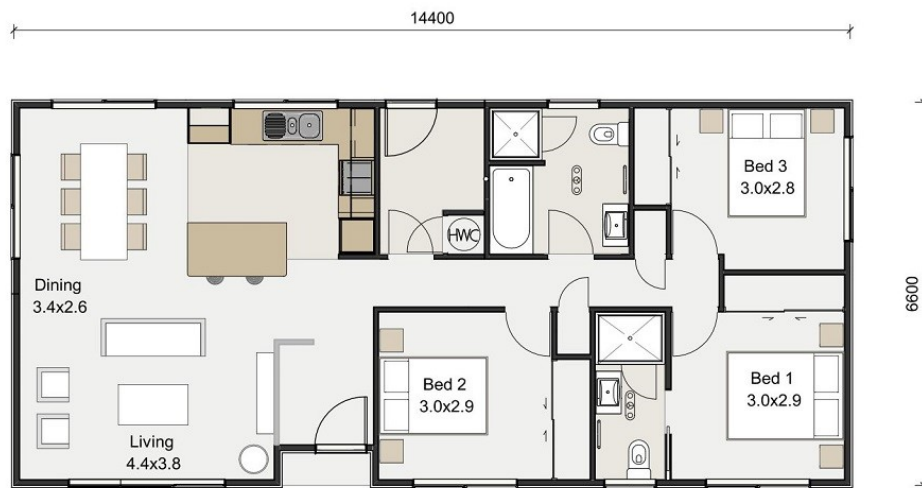


**first choice**

by KEITH HAY HOMES

Artist impression only

**First Choice 95 Boxed Gable End, Te Puke**  
 95m<sup>2</sup>, 3 bedroom, 2 bathroom, 1 living/dining, 1 laundry



**This home comes complete with:**

- Colorsteel Maxx roof and boxed ends
- James Hardie 180 Smooth Weatherboards with Axon Board to gable ends
- Built for very high wind zone
- Double glazed windows and fully insulated for a warmer, drier home
- Heated towel rails in bathrooms
- Smeg stainless steel kitchen appliances, provision for dishwasher
- Floor coverings—Carpet Mill carpet and vinyl in wet areas
- Interior decorating—Resene paint throughout

**Additions (not included in specifications):**

- House delivery and foundations from Te Puke branch
- Site, Building and Resource consents
- Special foundations, site excavation
- Site service connections—power, phone, water, drainage etc
- Decks, steps and rails