

URBAN RESIDENTIAL

by KEITH HAY HOMES

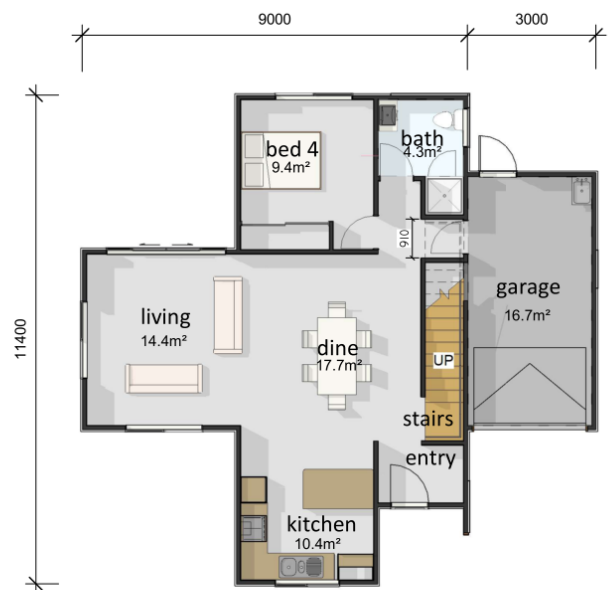


Ridgewood

4 bedroom, 3 bathroom, 1 living/dining, 145.57 m²



Ridgewood Level 1
54.62m²



Ridgewood Level 0
90.95m²

Modern double story designed to fit on a compact section, a perfect family home or rental investment. Upstairs comprises of a large master bedroom with ensuite and 2 double sized bedrooms with another family bathroom. Bedroom 4 is downstairs making it ideal for guests, elderly parents, teenagers or a flatting situation. The downstairs bathroom is complete with a shower making it perfect for your guests or to use as an ensuite for bedroom 4. Downstairs open plan living/dining can open to the rear or the front of the site and allows good sunlight to enter the property and great for entertaining. Single internal access garage with laundry. If you require an additional bedroom we can provide the option of adding a master bedroom with walk in wardrobe and ensuite above the garage making this home 5 bedrooms, 4 bathrooms. Your choice of roofline (gable, hip, monopitch) and decorating for your own personal touch. Mixed horizontal and vertical cladding for sleek contemporary look. This plan has been designed to fit on less than a 200m² section and enables all the Auckland Council planning requirements to be met.