

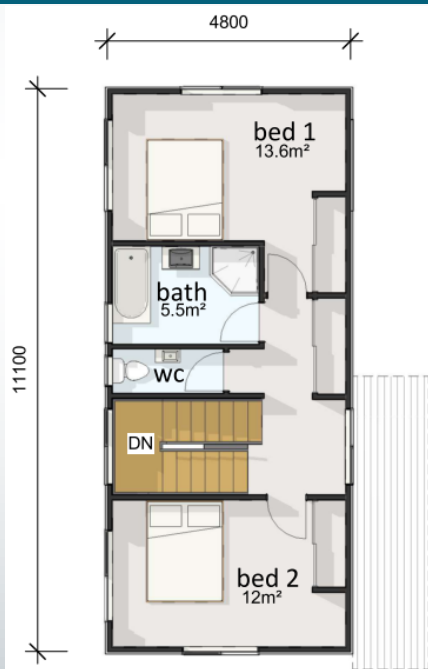
## URBAN RESIDENTIAL

by KEITH HAY HOMES

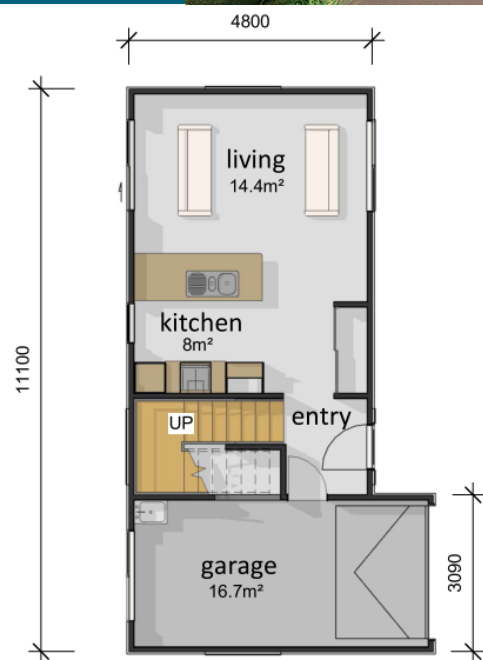


### Boston

2 bedroom, 1 bathroom, 1 living/dining, 104.45 m<sup>2</sup>



**Boston Level 1**  
47.70m<sup>2</sup>



**Boston Level 0**  
56.75m<sup>2</sup>

Compact, modern double story design. Perfect on a smaller section including as a secondary dwelling. Great first home or rental investment. Upstairs comprises of 2 double sized bedrooms with a bathroom and separate toilet to share. Downstairs provides an enjoyable open plan living/dining space that is the perfect entertaining area. Guests can sit at your kitchen island bench and chat. Sliding doors from your living area create a desirable indoor/outdoor flow. Single internal access garage with laundry. Mixed horizontal and vertical cladding for sleek contemporary look. Your choice of roofline (gable, hip, monopitch) and decorating for your own personal touch. This plan has been designed to fit on less than a 200m<sup>2</sup> section and enables all the Auckland Council planning requirements to be met.