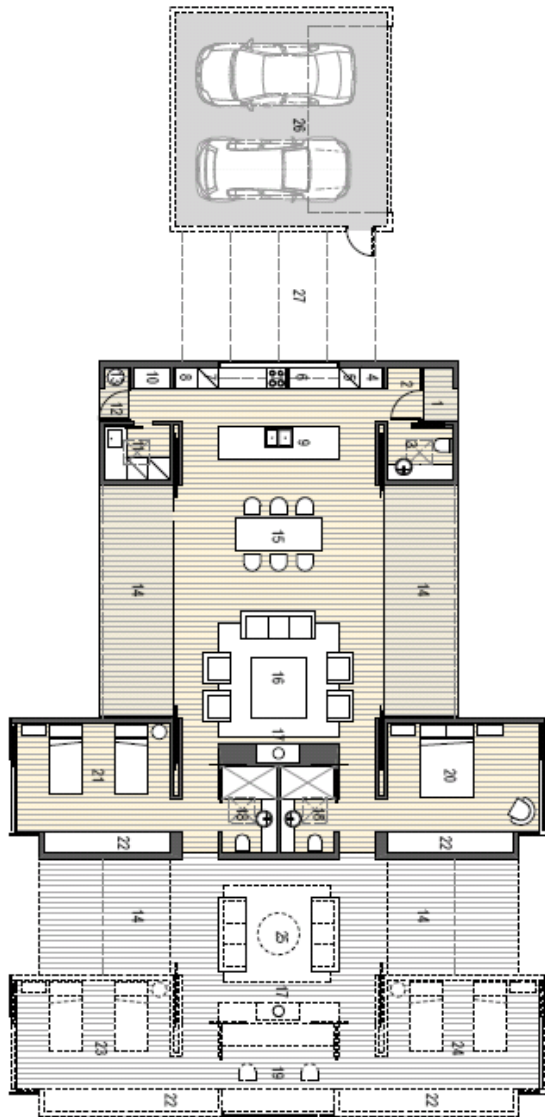


Park Terrace



Grey area demonstrates possible future extensions only

- Cleverly designed to be a low maintenance home
- Nu-Look SovereignSeries™ Architectural double glazed windows
- Custom cavity sliders to all interior doors creating great flow to all living spaces
- Elaborate designer kitchen complete with Electrolux appliances including two wall ovens, induction hob and integrated dishwasher
- Guest powder room and both ensuite suites include built in vanity and toilet with in-wall cistern
- Fully built in laundry cabinetry with ample storage
- Both generously-proportioned bedroom suites include spacious built in full-wall wardrobes
- Low maintenance colour fast Eco decking with covered verandas
- Modern energy efficient lighting throughout
- Modern, low maintenance, anti-slip vinyl flooring
- Fully insulated, exceeding thermal rating standards
- Feature fireplace
- Coloursteel® Endura corrugated roof
- Exterior cladding vertical corrugated Coloursteel® and James Hardie Titan® Facade Panel
- Grooved Ecoply internal walls
- 13mm GIB Ultraline® ceilings
- Designed to comply with Homestar™ criteria and Lifemark™ design standards
- Full interior/exterior colour consultation by a Resene specialist
- Allowance for future additions to be easily added through pre-determined openings
- Yard building consent (excludes site consent)
- Delivery 30km to flat site standard foundations
- 5 year personal guarantee

Optional Extras:

- Site and Resource Consent (if required)
- Site service connections - power, water, drainage
- Future extensions as shown