

# Built on a solid past, into a new future! Introducing the new 'Park Terrace'



## About Keith Hay Homes

'Success through Satisfied Customers' was the vision of Keith Hay when he began his business in 1938. More than seventy years and 22,000 satisfied clients later, Keith Hay Homes is still a 100% New Zealand family owned and operated company, built on a strong foundation of honesty, integrity and trustworthiness.

## Introducing 'Park Terrace'

With our experience creating homes for New Zealanders, Keith Hay Homes has earned its reputation for top quality, affordable homes.

Building upon this solid foundation, Keith Hay Homes is proud to present Park Terrace, an innovative and stylish architecturally-designed home, at an affordable price.

Let us help you open the door to your future.

[www.keithhayhomes.co.nz](http://www.keithhayhomes.co.nz) 0800 KEITH HAY  
534 844

**KEITH HAY  
HOMES**

# PARK TERRACE

This contemporary home is the result of a collaboration between KEITH HAY HOMES and ARCHITEX NZ, an award winning practise recognised for excellent design resulting in sustainable homes perfectly suited to New Zealand landscapes and lifestyles.

## About Park Terrace

Compact and contemporary, efficient use of space makes PARK TERRACE an entertainer's dream. Some of its highlights include:

- Architect designed
- an extravagant designer kitchen with built-in cabinetry and appliances, an island and two pantries for plenty of storage space,
- a large living and dining area, complete with an ambient fireplace built into a beautiful feature wall,
- floor to ceiling fully-recessing, double glazed glass walls which open onto two covered decks, creating a large sheltered courtyard at the centre of your home,
- two generously-proportioned bedroom suites, each with their own ensuite bathroom, deck access and spacious full-wall wardrobes,
- a modern, durable and easy to maintain floor finish throughout,
- a separate powder room for guests, and
- the option of an additional two bedrooms, media room and study plus additional decking.

## A home to suit your needs, now and in the future

At Keith Hay Homes we understand that your needs are unique and change over time. So, this home has been specifically designed to allow for easy expansion to adapt and grow with you. Park Terrace can be extended through pre-determined openings, eliminating the need for unnecessary changes to existing work. You can choose to start with a four bedroom home, complete with media room and study; or start with two generously proportioned bedrooms with the option to expand as your needs change.

## About the construction

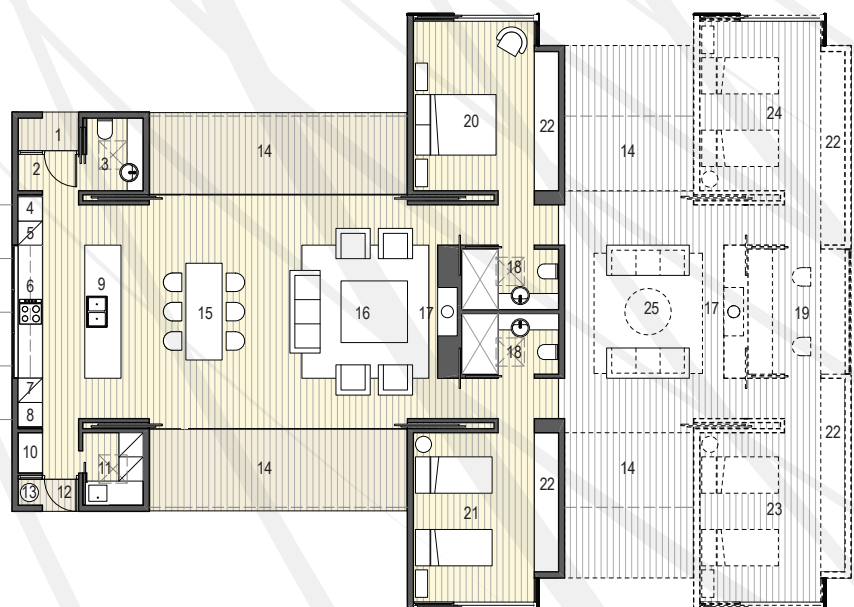
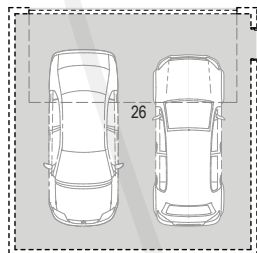
As a family business, Keith Hay Homes stakes its name and reputation on customer satisfaction. We are committed to using quality products from reputable providers. Our long-term relationships with key suppliers ensure value for money for our customers and confidence in quality workmanship which stands the test of time. In fact, we're so confident in the quality of Keith Hay Homes' construction that every home comes with a five-year personal guarantee from our Managing Director, David Hay.

ColourSteel Endura pre-painted steel roofing and cladding gives Park Terrace a country-barn style appearance that sits comfortably within any landscape. It also contributes to making Park Terrace a sustainable, enduring home that exceeds thermal rating standards. Park Terrace has been designed to comply with Homestar™ criteria and Lifemark™ design standards, for a comfortable, healthy, energy efficient and future-proof home.

Our homes are built in a controlled environment, ensuring quality control and reducing wastage, disruptions and delays. However, if you have access issues we can also build directly on your site. Best of all, our fast build times mean we can quickly make your dream home your reality.



5 YEAR  
PERSONAL  
GUARANTEE



### LEGEND

LIVING ROOM 16	ENTRY PORCH 1
FIREPLACE 17	HALLWAY 2
EN-SUITE BATHROOM 18	GUEST CLOAKROOM WITH SKYLIGHT 3
STUDY 19	PANTRY 4
BEDROOM 20	INTEGRATED FRIDGE 5
BEDROOM 2 21	COOKTOP 6
WARDROBE 22	INTEGRATED FREEZER 7
BEDROOM 3 23	SECOND PANTRY 8
BEDROOM 4 24	ISLAND BENCH 9
MEDIA ROOM 25	LINEN 10
GARAGE 26	LAUNDRY WITH SKYLIGHT 11
CARPORT 27	PORCH 12
	BIN 13
	COVERED OUTDOOR DECK 14
	DINING ROOM 15

HOUSE AREA - 125m<sup>2</sup>  
 FUTURE HOUSE AREA - 78m<sup>2</sup>  
 TOTAL AREA - 203m<sup>2</sup>  
 GARAGE AREA - 38m<sup>2</sup>  
 OUTDOOR AREA - 26m<sup>2</sup>  
 FUTURE OUTDOOR AREA - 26m<sup>2</sup>